

The Cosy 131 User Guide

USER MANUAL

UM-0004-00 EN 1.1 ENGLISH



Important User Information

Liability

Every care has been taken in the preparation of this document. Please inform HMS Industrial Networks SA of any inaccuracies or omissions. The data and illustrations found in this document are not binding. We, HMS Industrial Networks SA, reserve the right to modify our products in line with our policy of continuous product development. The information in this document is subject to change without notice and should not be considered as a commitment by HMS Industrial Networks SA. HMS Industrial Networks SA assumes no responsibility for any errors that may appear in this document.

There are many applications of this product. Those responsible for the use of this device must ensure that all the necessary steps have been taken to verify that the applications meet all performance and safety requirements including any applicable laws, regulations, codes, and standards.

HMS Industrial Networks SA will under no circumstances assume liability or responsibility for any problems that may arise as a result from the use of undocumented features, timing, or functional side effects found outside the documented scope of this product. The effects caused by any direct or indirect use of such aspects of the product are undefined, and may include e.g. compatibility issues and stability issues.

The examples and illustrations in this document are included solely for illustrative purposes. Because of the many variables and requirements associated with any particular implementation, HMS Industrial Networks SA cannot assume responsibility for actual use based on these examples and illustrations.

Intellectual Property Rights

HMS Industrial Networks SA has intellectual property rights relating to technology embodied in the product described in this document. These intellectual property rights may include patents and pending patent applications in the USA and other countries.

Table of Contents

Page

1	Preface	3
1.1	About This Document	3
1.2	Document history	3
1.3	Related Documents	3
1.4	Trademark Information	3
2	Requirements	4
2.1	Hardware	4
2.2	Software	4
3	Get in Touch with the Cosy 131	5
3.1	Talk2M account configuration	5
3.2	Assigning an IP Address	5
3.3	Accessing the Web Configuration Interface	6
4	Quick Launch Wizard	7
4.1	System Wizard	7
4.2	Internet Wizard	9
4.3	Talk2M Wizard	16
5	Home Section	18
6	Ready to establish the remote connection to your eWON	20
7	DI Config Wizard	21
7.1	Remote Access Control	21
7.2	DI Alarm Notification	22
8	Wan fallback	24
9	Diagnostic and Setup	26

This page intentionally left blank

1 Preface

1.1 About This Document

This document presents the features of the eWON Cosy 131 and explains briefly the steps to take to get a functional Cosy 131.

For additional related documentation and file downloads, please visit www.ewon.biz/support.

1.2 Document history

Version	Date	Description
1.0	2018-05-03	First release
1.1	2018-08-29	Added: NTP Client / Server Added: Anybus Bolt Configuration Added: Easy APN

1.3 Related Documents

Document	Author	Document ID
eBuddy	HMS	AUG-0063-00
Talk2M	HMS	AUG-0028-00
eCather Mobile	HMS	AUG-0072-00
M2Web	HMS	AUG-0058-00
Wan Fallback	HMS	KB-0286-00

1.4 Trademark Information

eWON® is a registered trademark of HMS Industrial Networks SA. All other trademarks mentioned in this document are the property of their respective holders.

2 Requirements

2.1 Hardware

This guide presents the features of the Cosy 131 which is used for remote access your devices.

2.2 Software

The Cosy 131 is configured through its web interface which is accessible with any modern web browser. The recommended platforms are:

- Firefox 15 and higher.
- Chrome 16 and higher.
- Safari 11 and higher.
- Edge 13 and higher.

eBuddy

The companion tool eBuddy assists with initial IP address configuration for the Cosy 131 and with maintenance tasks such as upgrading firmware, creating/restoring backups...

[Download eBuddy.](#)

eCatcher

The companion tool eCatcher is required if the Cosy 131 will connect to the Talk2M infrastructure; It also allows to create and setup a Talk2M account.

[Download eCatcher.](#)

3 Get in Touch with the Cosy 131

3.1 Talk2M account configuration

To allow the remote access the Cosy 131 needs to be connected to the Talk2M infrastructure. Talk2M offers a secured and easy to set up remote connection over the Internet.

To configure the Talk2M account:

1. Download and install eCatcher companion tool, [eCatcher, p. 4](#).
2. Start eCatcher and log into your Talk2M account, in case you do not have one yet; click on *Create a Free + Account* and follow the prompts on the screen. Once the Talk2M account is created, an email will be sent with the activation and instructions.
3. Click on the icon + *Add* to join the Cosy 131 to your Talk2M account.
4. Follow the screen prompts. *Be aware that some options require the full telephone number County Code included.*
5. The last step of the wizard, copy the *Activation Key* to the clipboard to use it later on the Talk2M wizard.

Now, the Cosy 131 is successfully on the *eWON list*.

3.2 Assigning an IP Address

It is important to understand why you need to give an appropriate IP address to your Cosy 131 if you want to avoid any conflict on your network.

The first communication with the Cosy 131 can be established using the companion tool eBuddy (check [Software, p. 4](#) for more details about eBuddy).

To change the IP address of the Cosy 131:

1. Connect the port labeled **LAN** (port #1) of the Cosy 131.

This can be done either to the computer point-to-point or through a network if the default IP of the Cosy 131 which is 10.0.0.53 will not conflict with another connected device.
2. Start the eBuddy application.

The application scans through the Ethernet adapter network and identifies the connected eWON devices displaying the IP address, subnet mask and serial number.

The utility also allows the modification of the default IP address without necessarily being in the same network range.
3. Optional: Highlight the row representing the device to be modified.
4. Click on the button *Set IP* from the top bar menu.
5. Indicate the serial number of the Cosy 131 to be modified. Click *Next*.
6. Enter the new IP address and its subnet mask. By clicking *Next*, eBuddy sends the commands to the Cosy 131 to change its IP address and to reboot.
7. Once the reboot completes, the Cosy 131 will be accessible at its new IP address.

3.3 Accessing the Web Configuration Interface

The configuration of the Cosy 131 can be done using its internal web pages.

While the computer is connected to a LAN port of the Cosy 131, open an Internet browser and enter the LAN IP address of the Cosy 131 into the address field. If the computer is not in the same network address range as the Cosy 131, its web pages can be reached using the “EZ DHCP” feature of the eBuddy utility. For more information, refer to eBuddy from the [Related Documents, p. 3](#)

Before beginning the configuration of the Cosy 131, authentication is required. The default login and password are both “adm”.



For security reasons, the default password must be changed.

The password can be changed through the *System Wizard* described below.

At the first boot of the Cosy 131 or after a reset level 2 and after successfully logging in, a prompt will appear to set the interface language.

After the interface language is selected, a configuration wizard is proposed to permit a quick configuration of the system and communication settings of the Cosy 131. On later connections, the configuration wizard is accessible through the *Wizards* button in the upper right corner.

4 Quick Launch Wizard

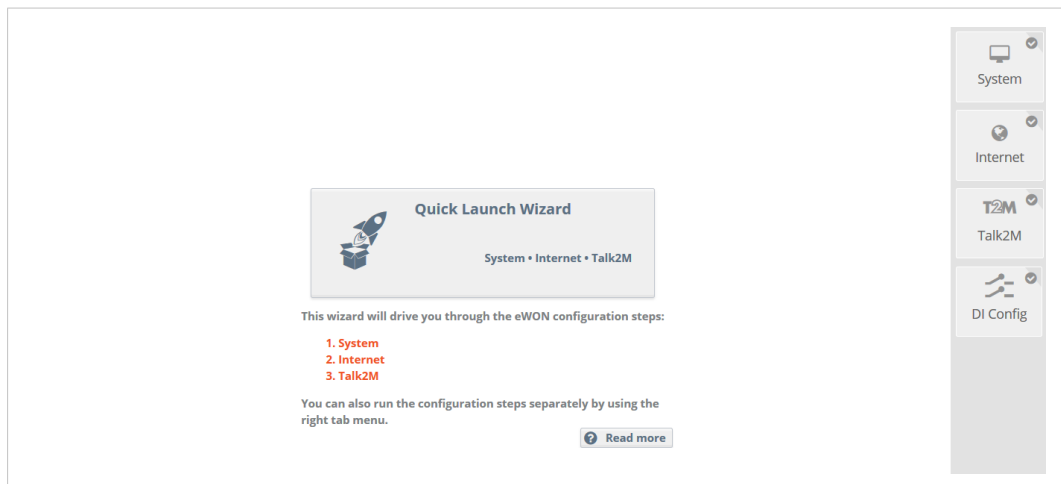


Fig. 1 Quick Launch Wizard Button

The Quick launch wizard will guide you through the different setup wizards to configure your Cosy for remote connection through Talk2M:

- The *System Wizard* configures basic system settings such as the date & time and the default username & password.
- The *Internet Wizard* configures the WAN communication settings for the Cosy 131.
- The *Talk2M Wizard* establish a VPN between the Cosy 131 and the Talk2M infrastructure.

4.1 System Wizard

The *System Wizard* configures basic system settings.

On the first screen of the *System Wizard*, enter the eWON name.

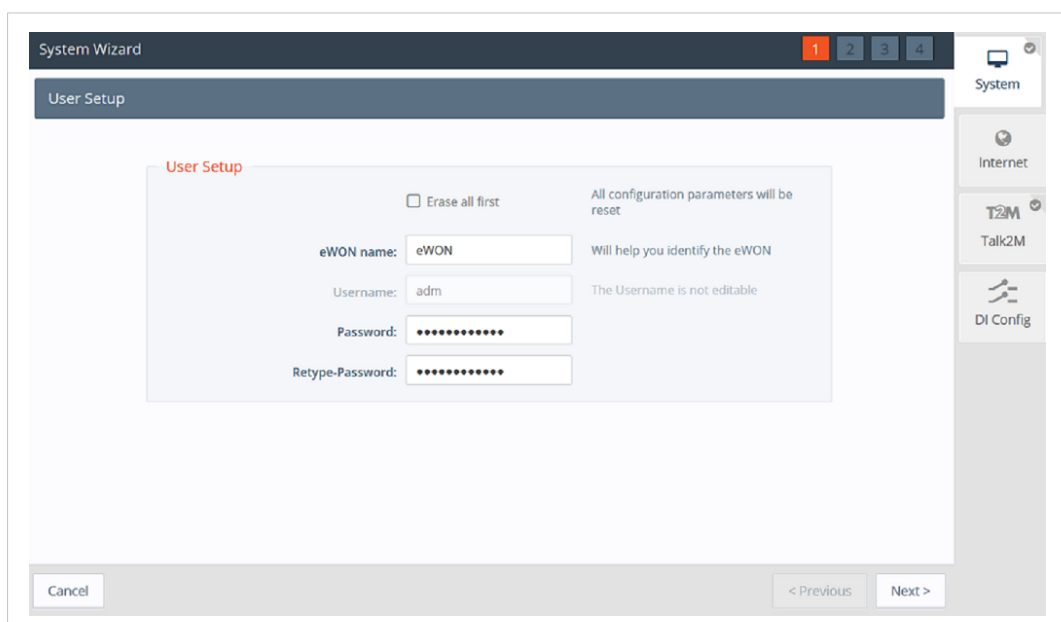


Fig. 2 System Wizard User Setup



For security reasons, it is required to change the default password for the adm user.

On the second screen of the *System wizard*:

- Configure the accurate *date and time* settings. For Talk2M communication, the date of the Cosy 131 must be correct.
- Configure the *Timezone* settings, click either on the arrow or the map icon.
- The URL of the remote NTP server. By default, “ntp.talk2m.com is set” This field is shown only if “Update clock via NTP” is selected.
- The time interval used to update the clock. This field is shown only if “Update clock via NTP” is selected.

Click *Next* to proceed to the next screen.

Clock setup

Timezone: UTC

Configure update of clock: Manually Update clock via NTP

NTP Server address: ntp.talk2m.com

Update interval: 1440 Minutes

Fig. 3 System Wizard Date and Time

The third screen of the *System Wizard* shows the standard attribution of the four port Ethernet switch of the Cosy 131.

The ports #1, #2, #3, will be dedicated to LAN *local access* network and port #4 will be dedicated WAN *Internet access* network.

The attribution of a port can be easily recognized by its LED color:

- Orange for a WAN port.
- Green for a LAN port.

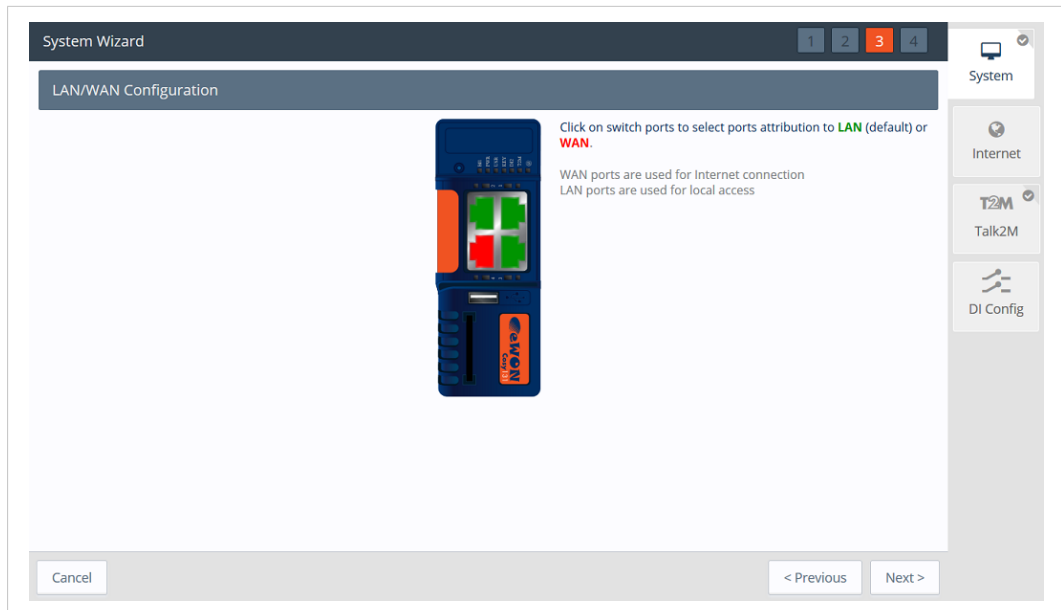


Fig. 4 System Wizard LAN/WAN Configuration

Click *Next* to finish the *System Wizard* settings.

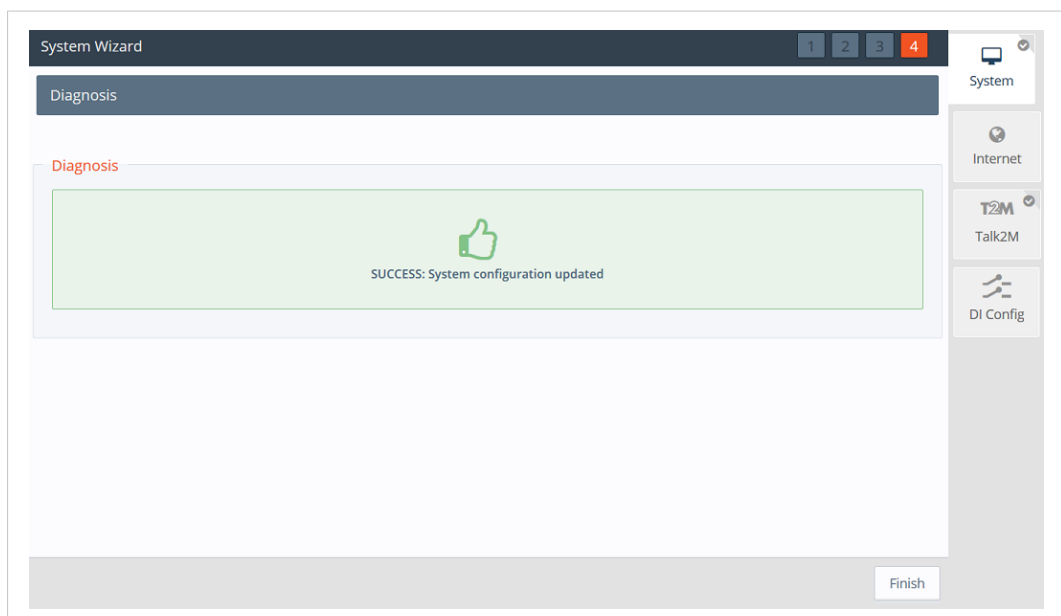


Fig. 5 System Wizard Diagnosis

4.2 Internet Wizard

The Internet Wizard configures the Internet settings for the Cosy 131. The Interface field allows to select which interface will be in use for the Internet connection:

- Ethernet WAN connection
- Cellular Modem
- Wi-Fi Connection

The following chapter will explain the Ethernet WAN connection, which is the most common connection and available among all Cosy models. The different settings for the cellular and Wi-Fi connection will be explained in next chapters.

4.2.1 Ethernet WAN Configuration

- Select the Ethernet Internet connection.

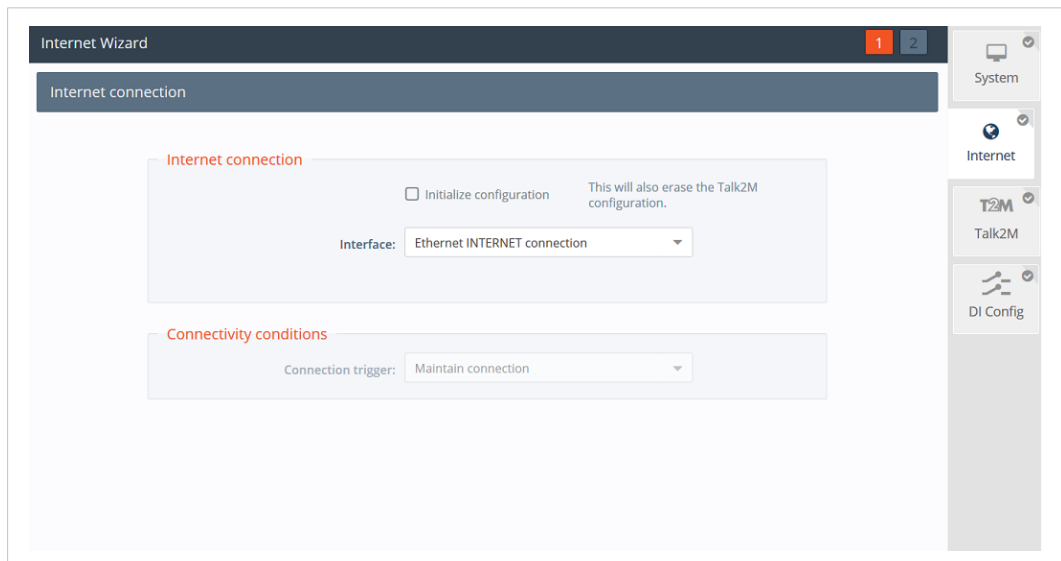


Fig. 6 Internet Wizard Connection Setup

Click *Next* to continue the WAN interface configuration.

- Select *DHCP* from the dropdown to receive an IP automatically from the LAN network. If needed select *Static* or *BootP* options according to the LAN network configuration.

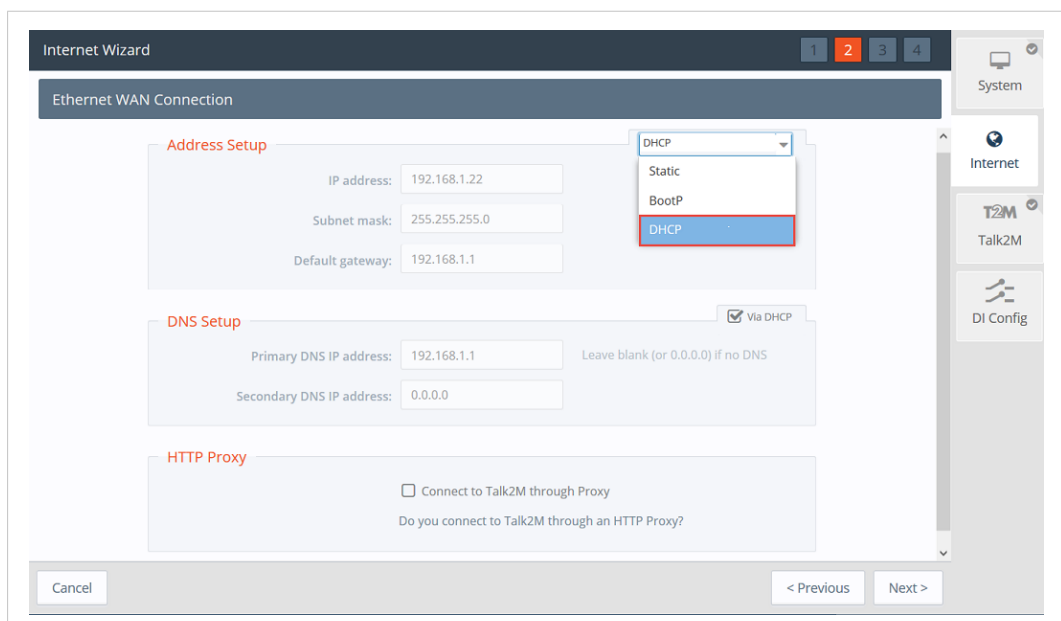


Fig. 7 Internet Wizard Ethernet WAN Connection Setup

Click *Next* to proceed to the next screen.

- The *Internet connection test* is enabled by default, it allows the Cosy 131 to verify the Internet connection. If this network uses a proxy server or if port 80 is closed for outbound connections, uncheck this option.

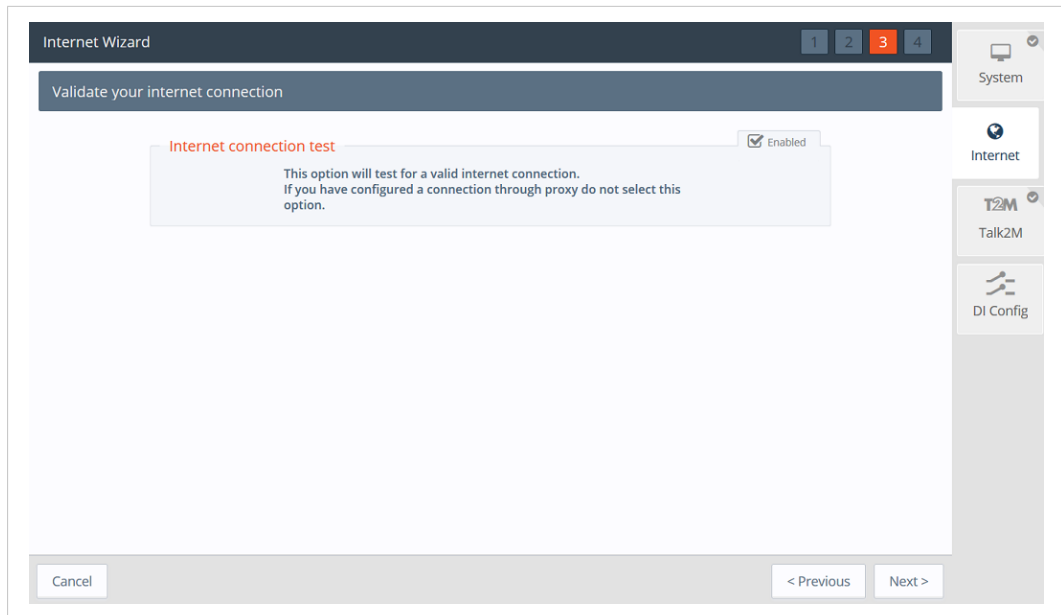


Fig. 8 Internet Wizard Validation

Click *Next* to apply the configuration changes.

Once the wizard completes successfully, the Cosy 131 is connected to the primary WAN network.

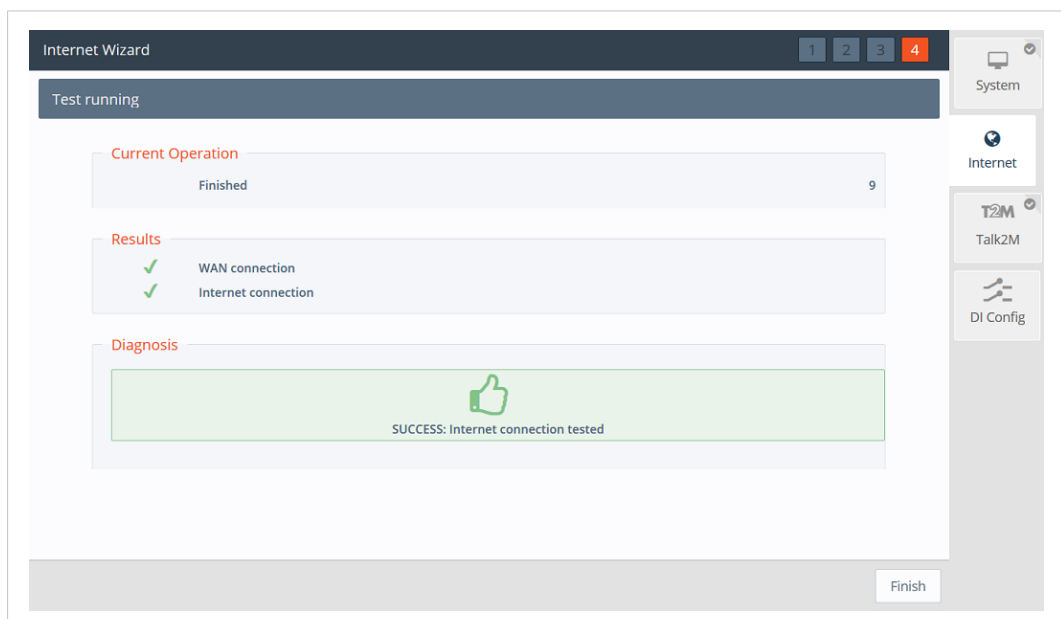


Fig. 9 Internet Wizard Test

4.2.2 Cellular Network Configuration

Instead of using the *WAN Ethernet connection* for the Internet connection, if your Cosy 131 embeds a cellular modem, you can also use the modem for the Internet connection .

- Select *Maintain connection* to keep the Cosy 131 connected to Internet permanently or select *Send SMS to activate* to activate the remote access only after receiving an SMS.

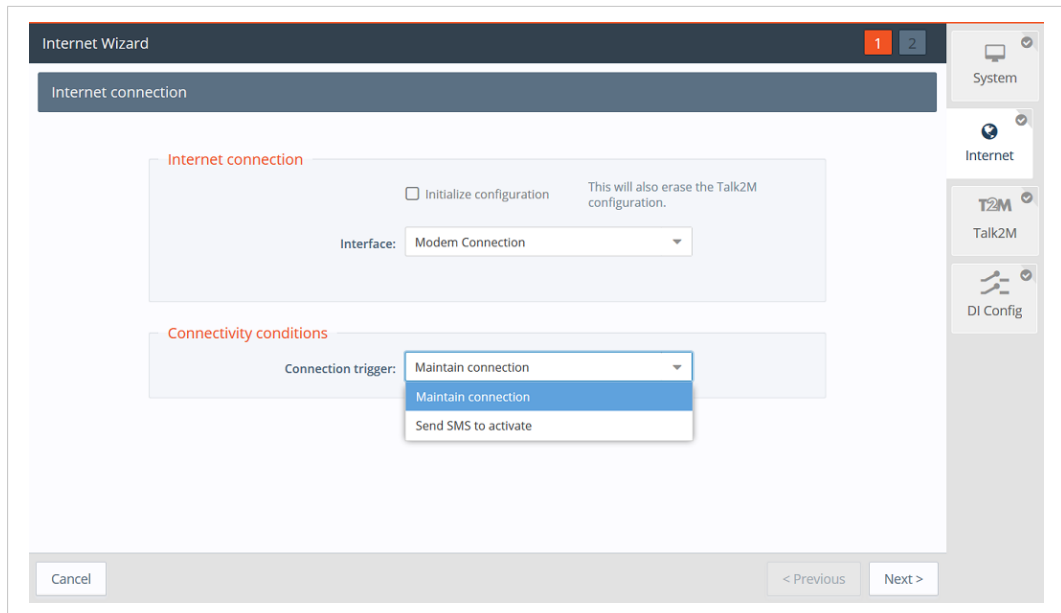


Fig. 10 Internet Wizard Connection Setup

- Configure the SIM card pin code.
- Select the country of the SIM card
- Select the operator of the SIM card
- The wizard will propose *Access Point Name* APN according to the country and operator selected. If the APN is not in the proposed list, select Custom APN and type the desired APN manually. Be aware that some operators have different APN for the same local area.
- If required, enter the APN *Username* and *Password*, otherwise leave this field empty. Double check with your operator to enter the correct information.
- In case of specific connection settings such as network type or preferred provider; check the *Show advance options* checkbox

Click *Next* to apply the configuration changes.

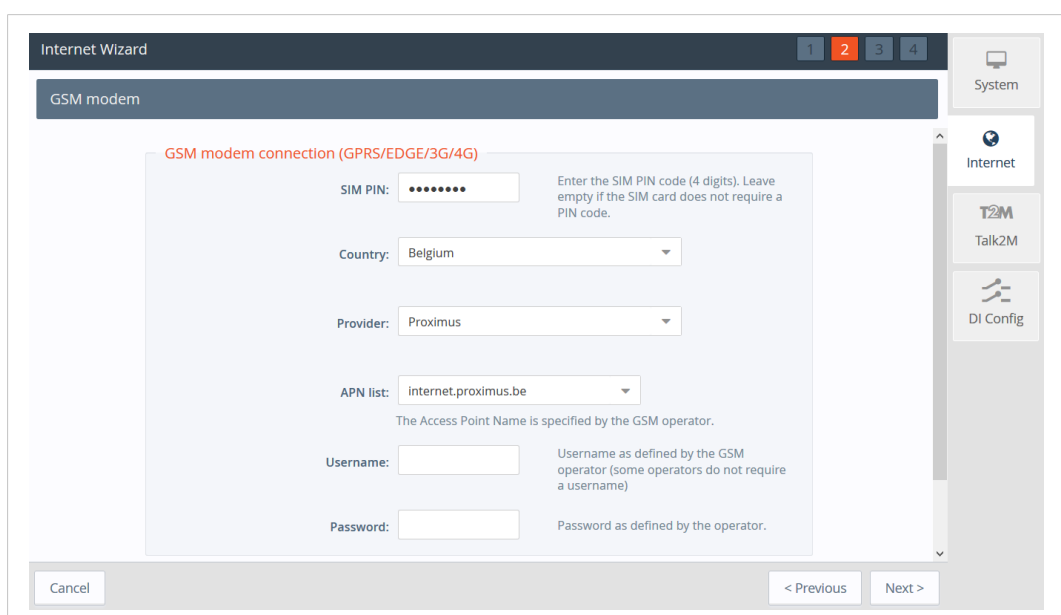


Fig. 11 Internet Wizard GSM Modem

Once the wizard completes successfully, the Cosy 131 is connected to the Cellular WAN network.

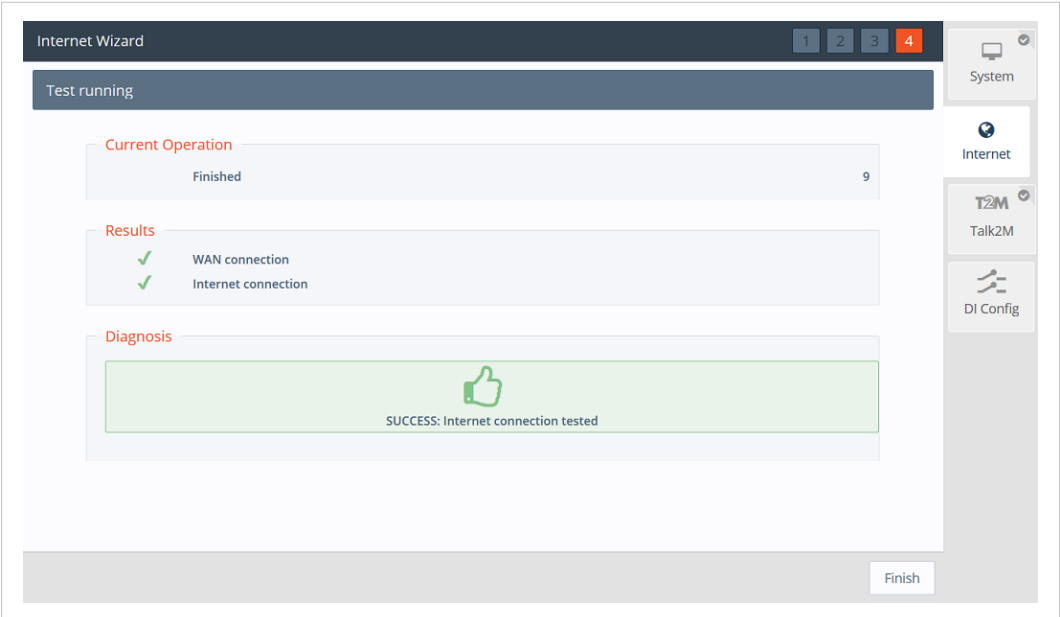


Fig. 12 Internet Wizard Test

4.2.3 Wi-Fi Network Configuration

Instead of using the WAN Ethernet connection for the Internet connection, if your Cosy 131embeds a cellular modem, you can also use the modem for the Internet connection.

- Select the connectivity conditions accordingly

Click *Next* to proceed to the next screen.

Fig. 13 Internet Wizard Connection Setup

- Select the Wi-Fi network to connect and enter the password.
- Keep the *DHCP* default settings for the Wifi WAN Connection and DNS, unless otherwise required by the local IT department.
- In case of specific proxy connection settings; check the *Connect to Talk2M through proxy* checkbox

Click *Next* to apply the configuration changes.

Fig. 14 Internet Wizard Wifi Setup

Click *Next* to proceed to the next screen.

- The *Internet connection test* is enabled by default, it allows the Cosy 131 to verify the Internet connection. If this network uses a proxy server or if port 80 is closed for outbound connections, uncheck this option.

Click *Next* to apply the configuration changes.

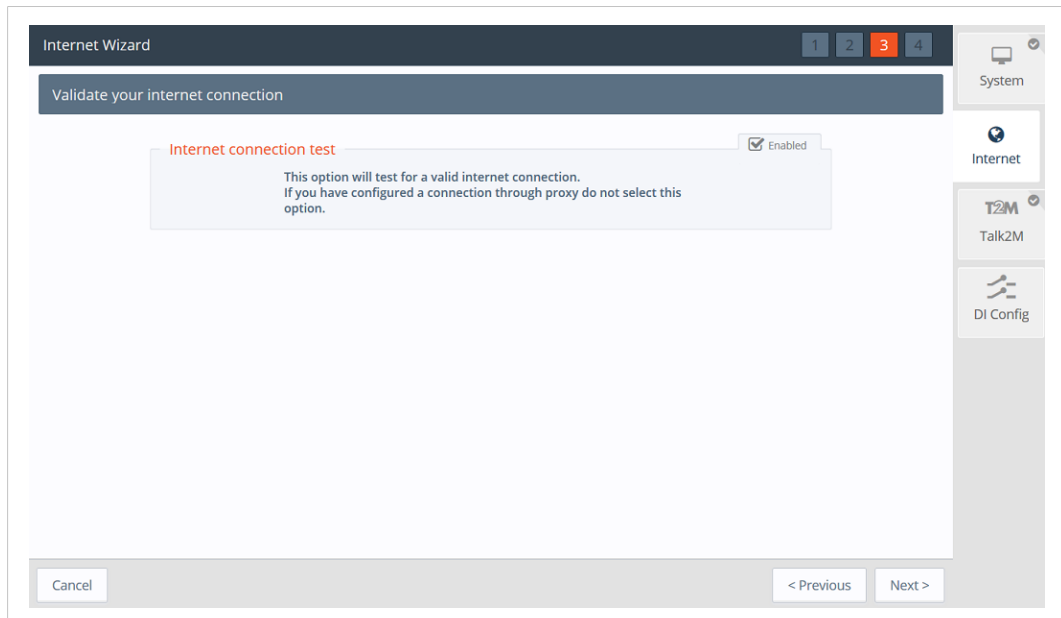


Fig. 15 Internet Wizard Wifi Validation

4.3 Talk2M Wizard

The *Talk2M Wizard*, configures the VPN connection between the Cosy 131 and your Talk2M account on the Talk2M server..

- On the first screen of the *Talk2M Wizard*, select *Register with Activation Key* option
- Paste the *Activation Key* .

Click *Next* to move forward to the next screen.

Fig. 16 Talk2M Wizard Activation Key

Alternately, it is possible to register with the eWON Name option:

- Click on *Register with eWON Name*
- Enter the Talk2M name of the Cosy 131, and a valid Talk2M account user credentials.

Click *Next* to move forward to the following screen.

Fig. 17 Talk2M Wizard Registration Name

If the network used for Internet access apply a proxy server:

- Check the *Enable* checkbox in the *Connect via HTTP Proxy* settings
- Enter the appropriate information for the proxy server

Click *Next* to move forward to the next screen.

Fig. 18 Talk2M Wizard Proxy Configuration

This Wizard connects to the Talk2M server and retrieve the VPN settings for the Cosy 131 linked to your account. The Wizard also check UDP and TCP connection to find the best suitable option for this eWON. If the wizard completes successfully, the Cosy 131 is now configured for Remote Access through Talk2M. If the wizard fails, the [Diagnostic and Setup, p. 26](#) section will give additional troubleshooting information.

Fig. 19 Talk2M Wizard Validation

5 Home Section

The Summary page or home section, shows at a glance information about the health and status of the Cosy 131. Its current Internet connection and VPN connection status, date and time, and firmware versions are all displayed

Internet Connection

Fallback	The status of the WAN fallback feature. For more information about the WAN fallback, check the Wan fallback, p. 24 .
Internet Status	This field appears only if the Internet connection of the Cosy 131 hasn't been configured.
Connected since	Elapsed time since the Cosy 131 is connected to the Internet.
WAN IP Address	IP address of the WAN connection.
Connected interface	WAN interface used to connect the Cosy 131 to the Internet.
WiFi Status	The SSID of the the Wi-Fi network the Cosy 131 is currently connected to. This field appears only if the Cosy 131 is equipped with a Wi-Fi interface.
GSM Status	The name of the cellular operator, the signal strength and the cellular technology used.
GSM data consumption	The cellular consumption of the Cosy 131 (upload & download).

VPN Connection

Status	This field appears only if the VPN connection of the Cosy 131 hasn't been configured.
Connected since	The elapsed time since the Cosy 131 is connected to the VPN service. This field doesn't appear if the VPN connection hasn't been configured.
VPN IP Address	The IP address of the VPN connection. This field doesn't appear if the VPN connection hasn't been configured.

System Information

Current user	The user currently used to browse the web interface.
eWON Type	The model of the device.
Serial Number	The serial number of the device.
Firmware Version	The current firmware version of the device.
Current time	The current date & time of the device.
LAN IP/Mask	The LAN IP address and subnet mask of the device. By default: 10.0.0.53/255.255.255.0
Embedded modems	The type of modem inserted in the Cosy 131: Wi-Fi or Cellular This field appears only if the model of the Cosy 131 is equipped with Wi-Fi or Cellular connection.

Gateway Status

USB	Status of the USB connectivity. By default, it is activated. Possibility to change this status by clicking on it.
NAT 1:1	Status of the NAT 1:1 By default, it is deactivated. Possibility to change this status by clicking on it.

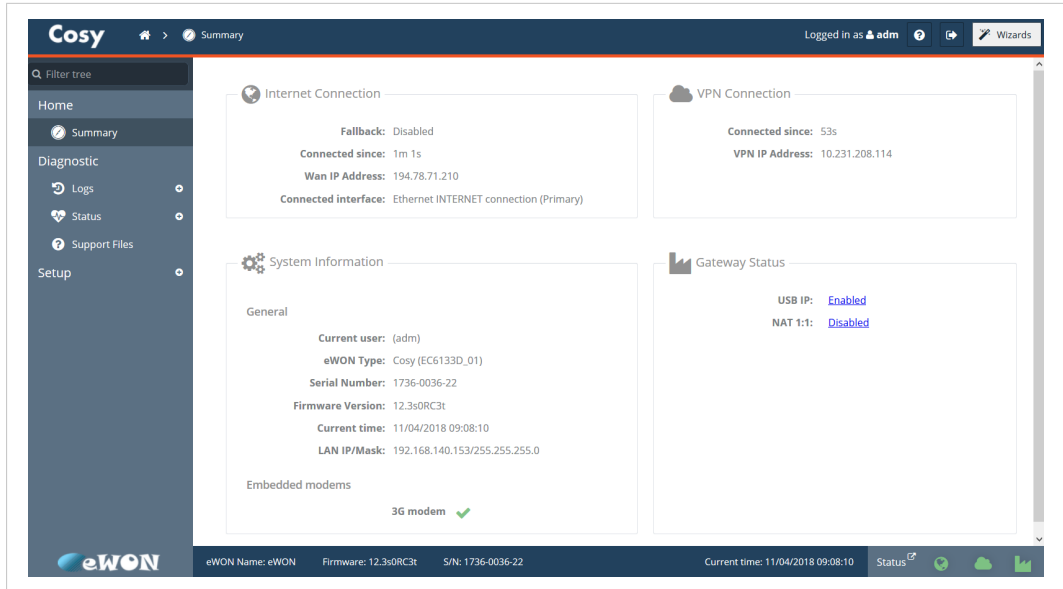


Fig. 20 Summary Page

6 Ready to establish the remote connection to your eWON

The Cosy 131 is now configured and available for remote access.

Start now eCatcher to connect your Cosy 131 remotely. Alternatively, you can also use *eCatcherMobile* or *M2Web*.

eCatcher Mobile:

It is the app version to be installed on your mobile devices running under Apple iOS or Google Android. It is used to initialize secure remote access and allows you to use mobile applications. For further information, refer to eCatcher Mobile from the [Related Documents, p. 3](#)

M2Web:

It allows the remote Web access to your eWONs. To realize the remote Web access, no special software is needed on the PC or on the tablet. For further information, refer to M2Web from the [Related Documents, p. 3](#)

7 DI Config Wizard

This option is not part of the *Quick Launch Wizard*, so it is only available by clicking on the *DI Config* wizard. Moreover, the DI physical connection need to be wired to be used as a function.

The digital inputs can be used to :

- Control the remote access using a *Key switch*
- Send out an alarm notification by email and/or SMS

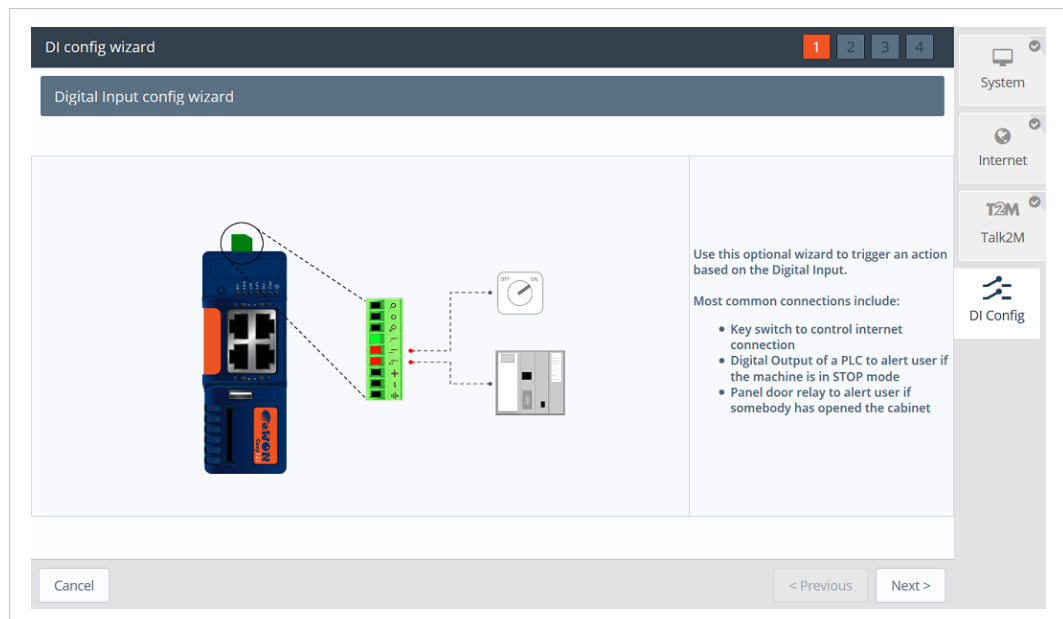


Fig. 21 DI Wizard

7.1 Remote Access Control

To enable the remote access control:

- Click the *Enabled* checkbox. If enabled, then Talk2M remote access will only be possible at the high state of the digital input 1. Only if the *Key Switch* has been enabled.

Fig. 22 DI Wizard Remote Access Key Configuration

7.2 DI Alarm Notification

The following options are valid for **DI1** and **DI2**. For both digital inputs you can setup email or SMS text message notification.

The *DI Config Wizard*: Select the option(s) by simply checking the *Enable* checkbox.

- The *SMS notifications*; enter the phone number, and body of the message accordingly; then a notification will be sent when the *Digital Input* switch on a high state.
- The *Email notification* enter the recipient, subject, and body of the message; then a notification will be sent when the *Digital Input* switch on a high state

Fig. 23 DI Wizard Notification Key Configuration

Click *Next* to test and apply the *Digital Input* connection settings.

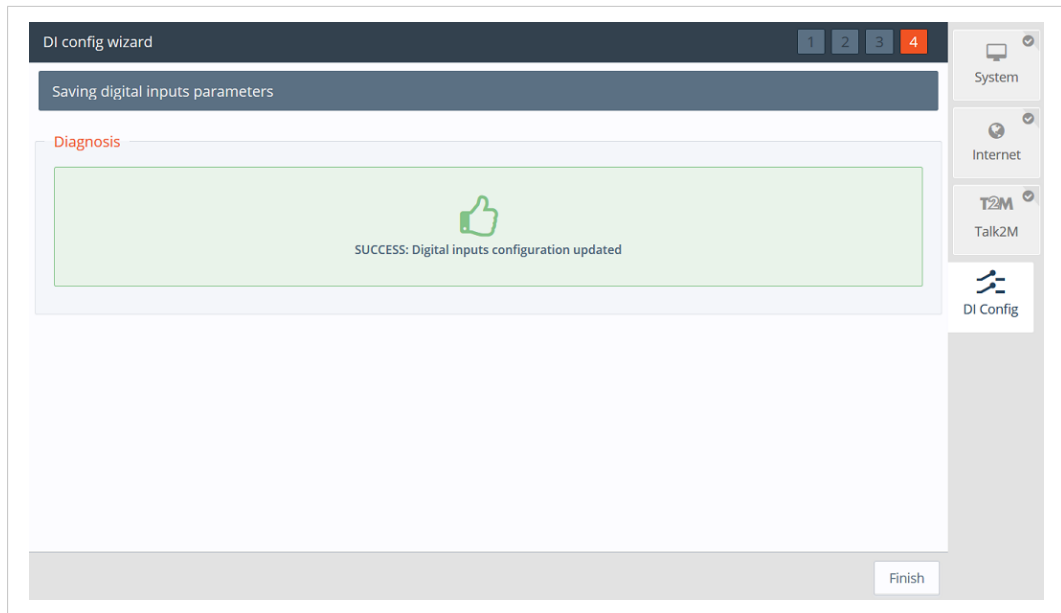


Fig. 24 DI Wizard Remote Key Configuration Validation

If the *Digital Input* is on a high state at boot time; then a notification is sent out once the Cosy 131 is connected to Talk2M and a prefix "(BOOT)" is added to your messages



SMS and email notifications *even on a Cosy 131 WiFi and ethernet*, are sent via T2M relays, but it does force the Cosy 131 to have a T2M connectivity and charges will apply for every SMS sent.

8 Wan fallback

The *WAN fallback*, is an alternative option that allows the eWON Cosy 131 to switch between networks automatically when the primary WAN network interface fails.

To configure the WAN fallback feature on the Cosy 131, the Internet wizard needs to be re-launched, then configure the Internet wizard once again. If the Cosy 131 detects a second WAN interface; it will ask you if you want to configure a *WAN Fallback* interface.

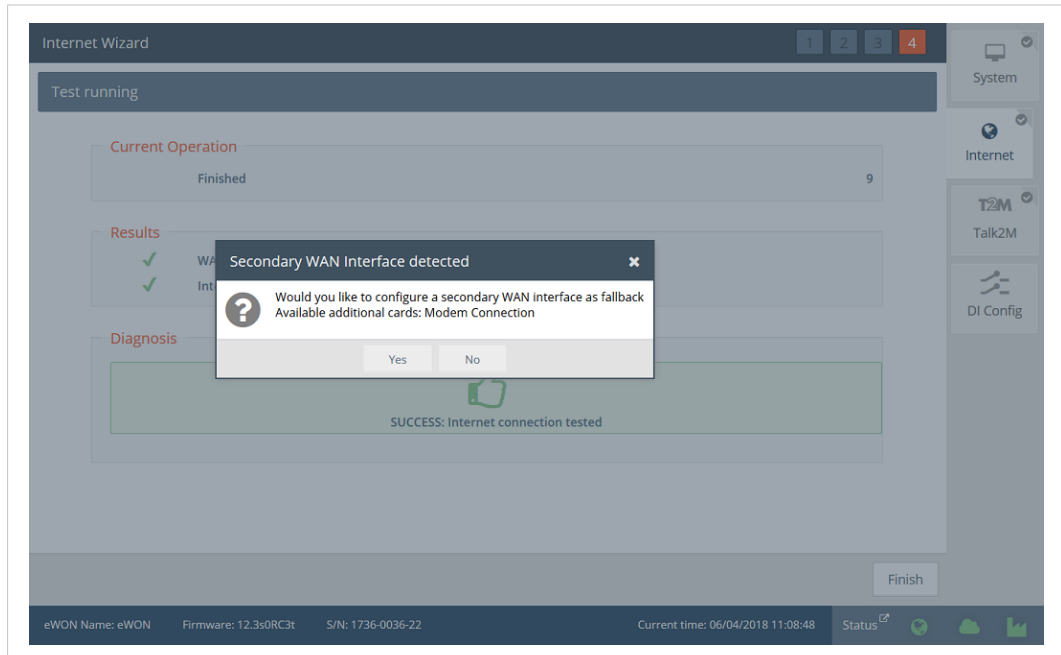


Fig. 25 Internet Wizard WAN Fallback

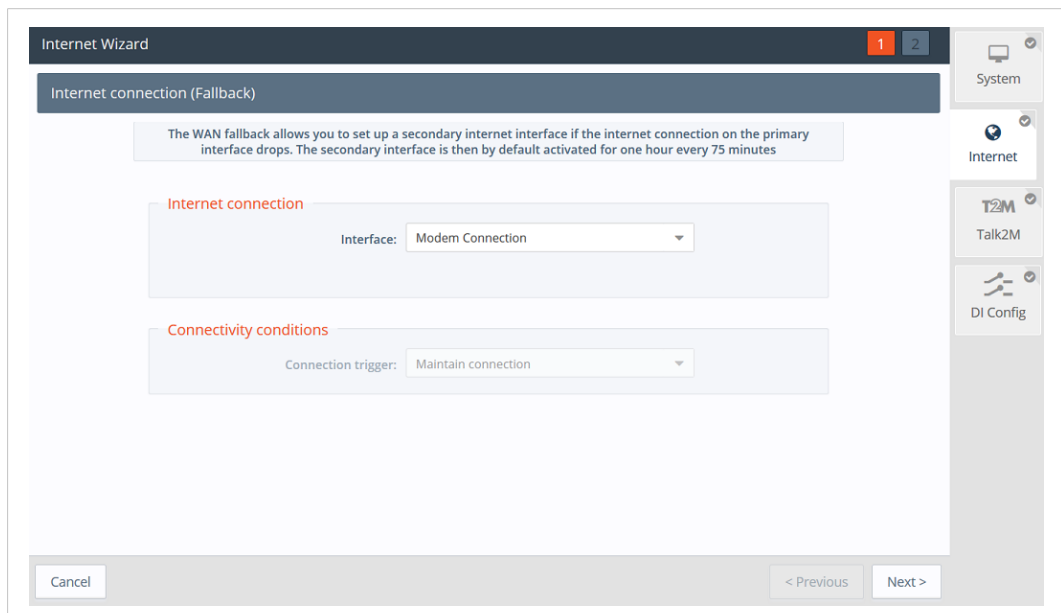


Fig. 26 Internet Wizard WAN Fallback Setup

In the case the primary WAN interface fails, the Cosy 131 will shift to the secondary WAN interface 3 minutes after the connection problem appears, then it will stay on the secondary WAN interface *the fallback interface* for 1 hour. After this hour the Cosy 131 will try to connect back the primary WAN interface and if it does not succeed the Cosy 131 will go back to the

secondary WAN interface. For further information about Wan Fallback refer to [Related Documents, p. 3](#)

Click *Next* to move forward to the next screen.

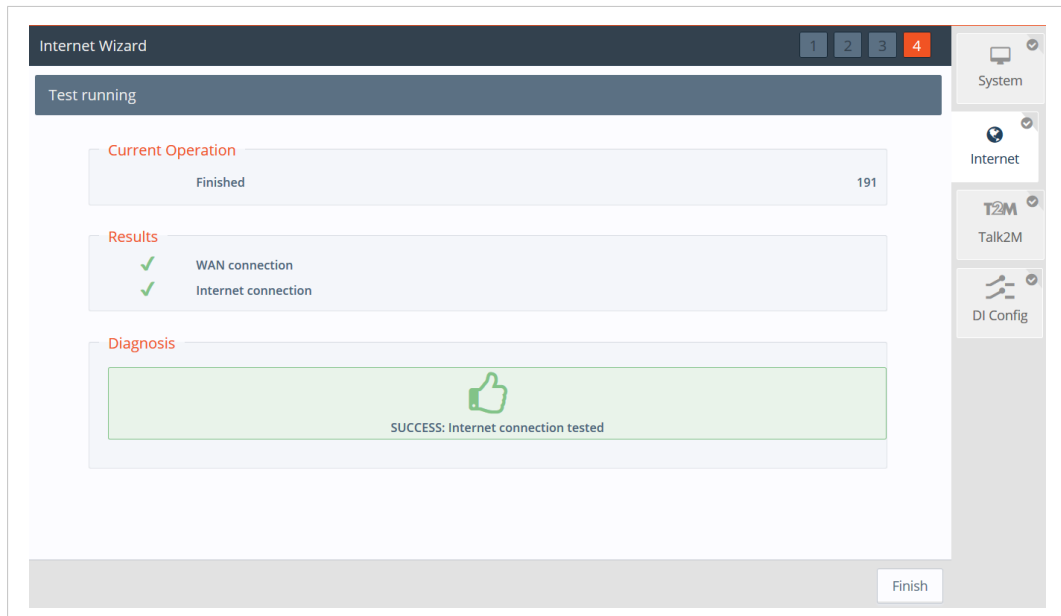


Fig. 27

Now, the *WAN fallback* network settings are successfully configured.



WAN fallback feature will appear only by clicking on the Internet Wizard. If the Quick Launch Wizard is performed; the Internet Wizard will not offer the WAN fallback option

9 Diagnostic and Setup

On the Cosy 131, the main configuration setup are done through the Wizard nevertheless, on the left hand side menu, there are 2 core options *Diagnostic* and *Setup*.

The *Diagnostic* menu, records significant system events on the Cosy 131 that can be used in case of troubleshooting; such a logs are given one of three severity levels: *Error*, *Warning* or *Trace* and color coded correspondingly

The *Setup* menu on the other hand offers an alternative approach to changes parameters such as *Language*, *Ethernet IP*, and/ or reboot the Cosy 131

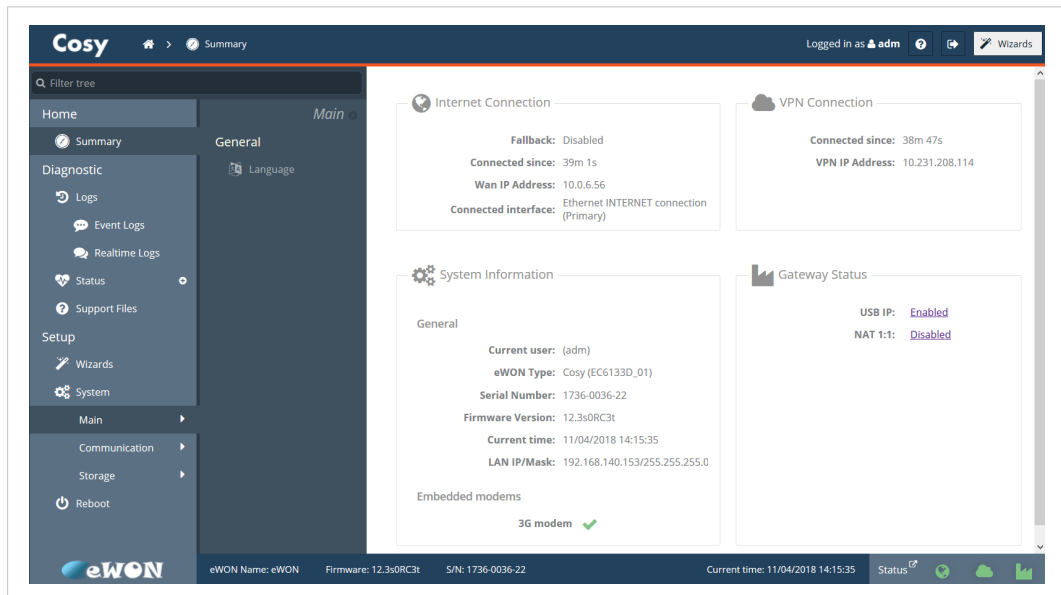


Fig. 28 Diagnostic and Setup menu

This page intentionally left blank

